

# SELECT SUITES

by DOUBLETREE RV



*Your suite  
awaits you...*





# Décor

*Denim*

*Ginger*

*Melon*

*Pecan*

*Cherry*



Custom wood-top bedroom vanity, day/nite shades with black-out feature, additional corner closet storage surround you with the warm feeling of home.



Inside the one piece radius fiberglass shower, you'll be greeted by the overhead skylight.



When it's time to retire for the day, you'll be warmly welcomed to the comfort of your Select Suite, complete with standard king size pillow top mattress.





*36 TK3*

Select Suites are graced throughout with residential-style raised panel cabinetry and luxurious fabrics - all tastefully coordinated.

The beautiful integrated entertainment center, shown with optional 27" TV and surround sound system, is bordered by decorative glass curios, generous storage and crown moulding.

- ◆ Cherry custom cabinets
- ◆ Solid surface countertops
- ◆ Matching raised panel refrigerator door front
- ◆ Sliding dinette table with four underseat storage chairs
- ◆ Coordinated matching chairs (recliners - optional)
- ◆ Hide-a-bed sofa
- ◆ Just a few of the many standard items your Select Suite offers







36 RK3

# Select Suites

*Distinctively Different, Uniquely DoubleTree.*

*See for yourself  
why Select Suites  
promise to deliver  
the features most  
in demand by  
today's discriminating  
market.*

The Select Suites' rear kitchen floorplan offers a comfortable, well designed open concept.







## DOUBLETREE RV

When DoubleTree RV began they used a simple philosophy: find out what the consumers want and exceed their expectations. Attention to detail starts from the ground up.

DoubleTree RV fifth wheels continue to set the standard for the industry and the new models are exactly what the name says... *suites*. And the best part is, they are built for you.

### Coach-Net®

EMERGENCY ROADSIDE ASSISTANCE

is provided with purchase of each suite

Aerodynamically shaped front fiberglass cap designed for maximum fuel efficiency



Three holding tanks –  
Fresh: 56 Gray: 50  
Black: 50  
(36 RK3 – Gray: 100)  
Powerful hydraulic system is integrated into the frame providing for smooth reliable operation of power expansions, leveling and jacks



Equa-Flex Suspension by Trailair® –  
A rubber equalizer that protects your suspension and increases the life of your fifth wheel. (standard)



Standards

King 72" x 80" pillow top mattress  
Cherry custom cabinets  
Solid surface kitchen countertops  
Solid surface lavatory top w/residential faucet  
Hide-a-bed sofa with side tables  
Sliding table w/four under-seat storage chairs  
Day/night shades-blackout in bedroom  
High durability nylon carpet with rebond pad  
Residential grade Congoleum floor covering  
Dometic 8 cu. ft. refrigerator w/raised panel doors  
Suburban 12 gal. gas/electric DSI water heater  
22" three burner range/oven  
Bi-fold range cover  
Residential heating system  
Suburban 42,000 BTU furnace  
Heat duct to toilet room  
Dometic 15,000 BTU A/C  
Wired for second A/C  
50 amp service w/detachable cord  
55 amp 12 VDC converter  
12 VDC battery  
120 VAC duplex receptacle at hook-up center  
Cable TV/phone ready  
Internet ready

TV antenna  
Ground satellite ready  
Satellite prep to roof  
Custom wood counter on bedroom vanity  
Interior ceiling fan  
Residential type bathroom fan  
One piece radius fiberglass shower  
Custom radius shower door  
Skylight in shower  
Utility closet  
No-fuss flush on black water  
Water pump switch at outside hookup center  
Big step at entry door  
30 lb. LPG tanks w/auto changeover  
Rear stabilizer jacks  
Hydraulic front jacks at 5 degree outboard angle  
Hydraulic slide outs with select push button controls  
5/8" T/G exterior plywood floor decking  
3" aluminum floor with R-7 insulation  
Twin 7,000 lb. Nev-R-Lube axles with shocks  
12" x 2" drum brakes  
Heavy duty greasable suspension  
16" E-rated tires  
Aluminum wheels

3 1/4" sidewalls  
1/4" Fome-cor vapor barrier wrapped sidewalls  
Gelcoat fiberglass exterior  
Gelcoat fiberglass exterior door  
Custom exterior graphics  
1/2" plywood roof decking  
One piece vinyl roof  
Four exterior scare lights  
L.E.D. exterior clearance lights  
Over the range microwave oven  
Pull out faucet  
Water filtration system  
Water manifold system  
Single lever water heater bypass  
Solar prep to roof  
Lend-a-hand grab handle  
Tinted safety glass windows  
Black nickel lights, hardware & ceiling fan  
R-13 Sidewalls, R-23 Roof, R-27 Floor  
Full extension roller bearing drawer guides  
Ceiling fan with light  
Equa-Flex suspension by Trail Air  
Concealed cabinet door hinges

Options

#### DÉCOR

Four interior colors  
(denim, ginger, melon and pecan)

#### INTERIOR

Booth dinette IPO table and chairs  
Coffee table Hi-Lo  
Leather recliner upgrade  
Deluxe fabric recliner(s) IPO std. chair  
Fluorescent light package  
Convenience package  
(blow dryer, coffee maker, dustbuster)  
Built-in fireplace

#### ENTERTAINMENT

27" Samsung FS TV w/S.S. pkg.  
Dome satellite dish, roof mount

#### KITCHEN

12 cu. ft. side by side refrigerator  
Icemaker  
GE convection oven  
Three burner cooktop w/convection oven  
Dinette Table w/extension  
Extreme smart sensor water pump/filter

#### BATHROOM

Flip-down shower seat 14" x 14"

#### BEDROOM

RCA 20" TV  
17" flat screen TV  
Queen bed suite  
Linen package queen bed  
Linen package king bed  
Cherry folding chair

#### SYSTEMS

13.5 BTU Lo/Pro AC (2nd)  
15.0 BTU Lo/Pro AC (2nd)  
Heat pump for 15.0 A/C  
Create-a-breeze in bathroom  
Fantastic fan w/wall switch  
Circle location: kitchen/bedroom  
Fantastic fan w/rain sensor and wall switch  
Circle location: kitchen/bedroom  
Washer/dryer prep  
Washer/dryer, stackable  
Washer/dryer, combo  
Central vacuum  
Gen. prep-auto change over  
Gen. Onan 5500 Marquis Gold  
Dual 6 VDC heavy duty battery system

#### CONSTRUCTION/SAFETY/RUNNING GEAR

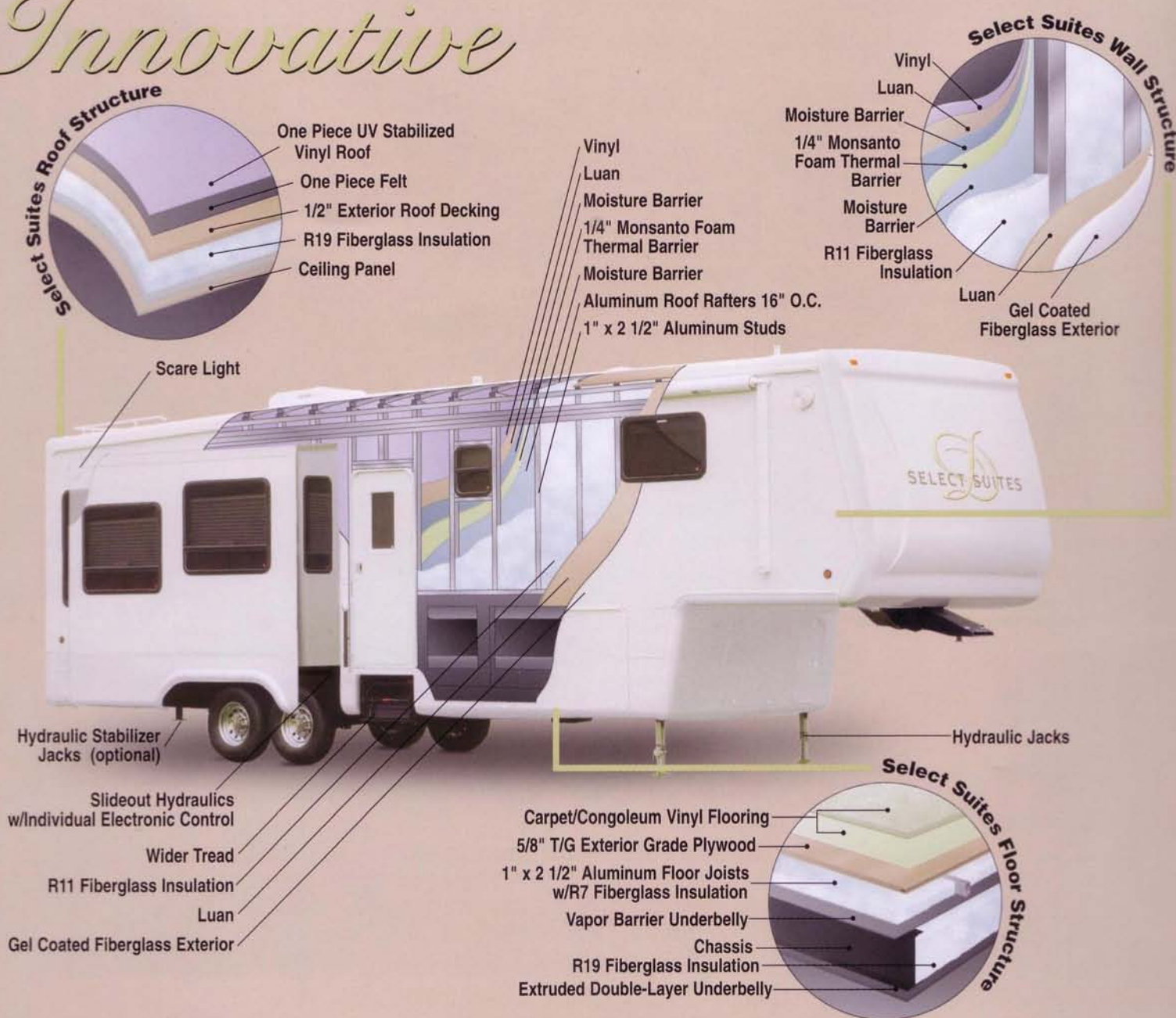
16" E rated spare tire & carrier  
Hydraulic rear stabilizer jacks  
Monroe gas magnum shocks  
Extended pin box  
Self-adjust 12 1/4" x 3 3/8" brakes  
Disc Brakes  
Trailair C/P suspension/Air Ride pin tandem  
Pinless front jacks

#### EXTERIOR/AWNINGS

Awning w/weathershield  
Awning - 1 step w/weathershield  
Living room slide topper  
Kitchen slide topper  
Bedroom slide topper  
Dinette slideout patio awning N/A RK  
Slide out storage tray  
40 lb. LPG bottle upgrade  
Audible backup camera system  
Roof rack & ladder  
Ladder only - no roof rack  
Thermopane windows (safety glass)  
Receiver-mounted 3 position bike rack  
RVIA - RVing seal fee state seal  
CSA package



# Innovative



**SELECT SUITES**  
by DOUBLETREE RV

*Your suite  
awaits you...*

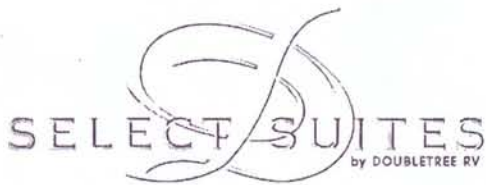
[www.doubletreervsuites.com](http://www.doubletreervsuites.com)

**DOUBLETREE RV**

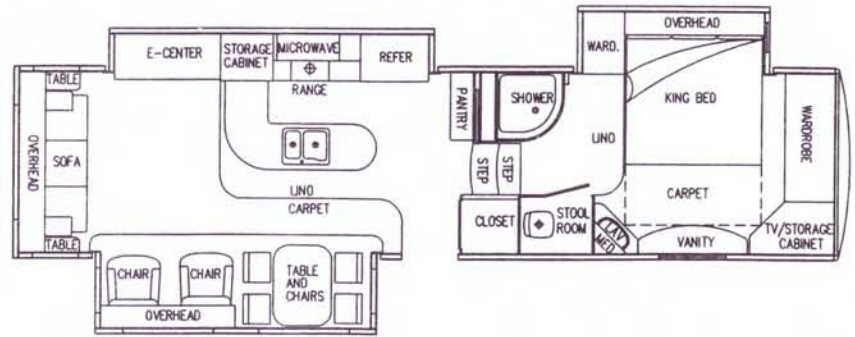
1000 Interchange Drive • PO Box 235 • Howe, IN 46746  
Reservations: 260-562-1075

This brochure is based upon the latest product information available at the time of printing. DoubleTree RV reserves the right to make changes at any time to prices, colors, materials, equipment, specifications and models, and to discontinue models without notice or obligation. Color representations are as close as photographic/print reproduction will allow. All specifications are approximate and dimensions nominal. Text and/or photos may represent equipment or décor items which may not be included as a standard item in your model of choice.

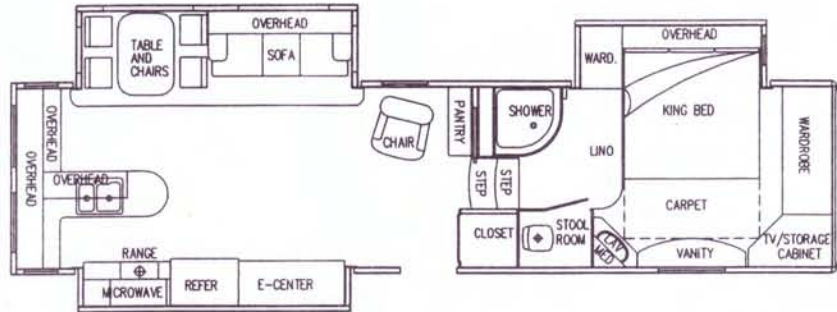




**36 TK**



**36 RK**



More floor plans will be available in the future!

## Highlighted Features and Specifications:

- Cherry custom cabinetry
- Solid surface kitchen countertops
- Solid surface lavatory top w/ residential faucet
- One piece radius fiberglass shower
- No-fuss flush on black water
- Over the range microwave oven
- Black nickel lights, hardware, & ceiling fan
- Tinted safety glass windows
- 3¼" sidewalls
- ¼" Fome-cor vapor barrier wrapped sidewalls
- Gelcoat fiberglass exterior
- 1/2" plywood roof decking
- One piece vinyl roof
- L.E.D. exterior clearance lighting
- R-13 sidewalls, R-23 roof, R-27 floor
- 5/8" T/G exterior plywood floor decking
- 3" aluminum floor w/ R-7 insulation
- Twin 7,000 lb. Nev-R-Lube axles with shocks
- Aluminum wheels
- Heavy duty greasable suspension
- Hydraulic front jacks at 5 degree outboard angle
- Dometic 8 cu. Ft. refrigerator w/ raised panel doors
- Suburban 12 gallon gas/electric DSI water heater
- 22" three burner range/oven
- Suburban 42,000 BTU furnace
- Dometic 15.0 BTU A/C
- Water filtration system and water manifold system
- Single lever water heater bypass

	<b>36 TK3</b>	<b>36 RK3</b>
Length	36' 11"	36' 11"
Width	101"	101"
Height	12' 8"	12' 8"
Dry Weight	12,700 #	12,900 #
Dry Pin Weight	2,800 #	2,950 #
GVWR	16,500 #	16,500 #
Carrying Capacity	TBD	TBD
Tire Size	ST235-80R16E	ST235-80R16E
Size of Axle	7,000 #	7,000 #
Number of Axles	2	2
Holding Tanks		
Fresh	70	70
Gray	50	100
Black	50	50
WH Capacity/Type	12 Gallon Gas/Electric DSI	12 Gallon Gas/Electric DSI
Furnace Size	42,000 BTU	42,000 BTU
Insulation		
Floor	R 27	R 27
Roof	R 23	R 23
Walls	R 13	R 13